

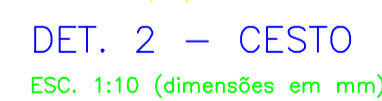
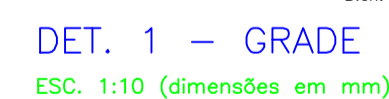
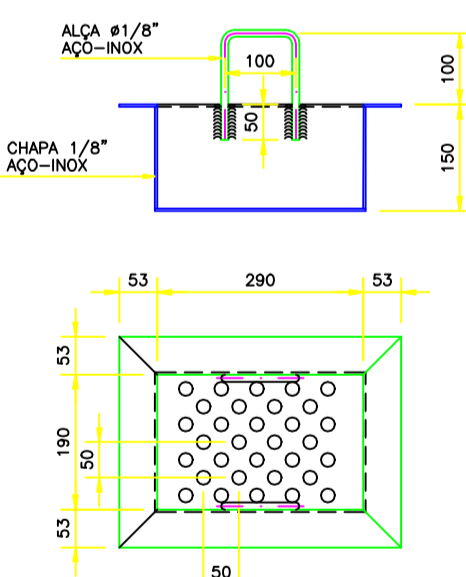
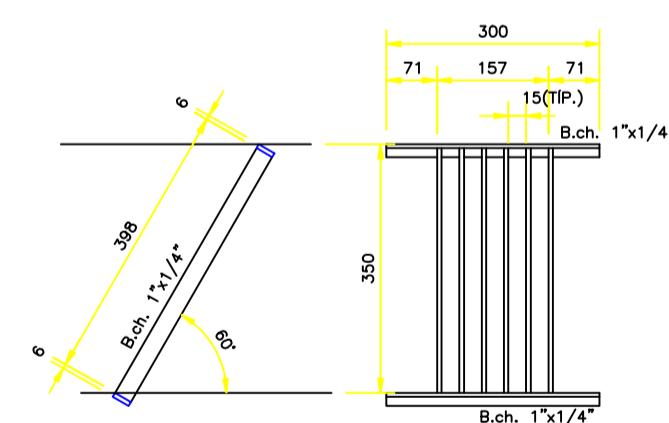
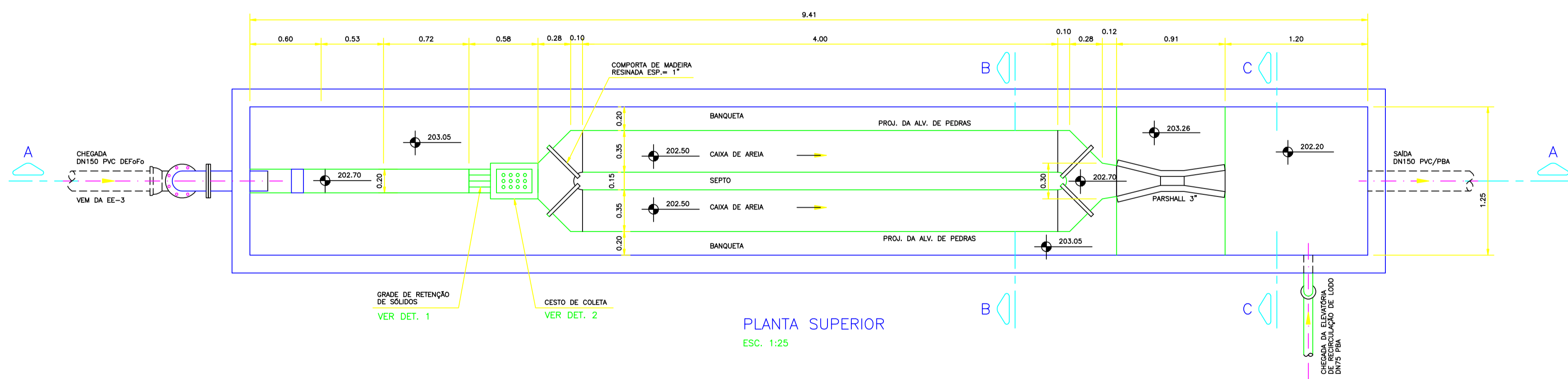
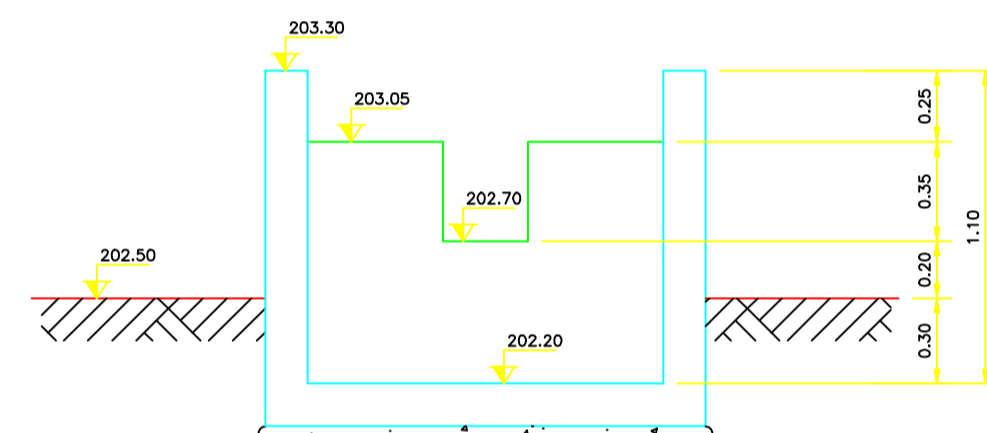
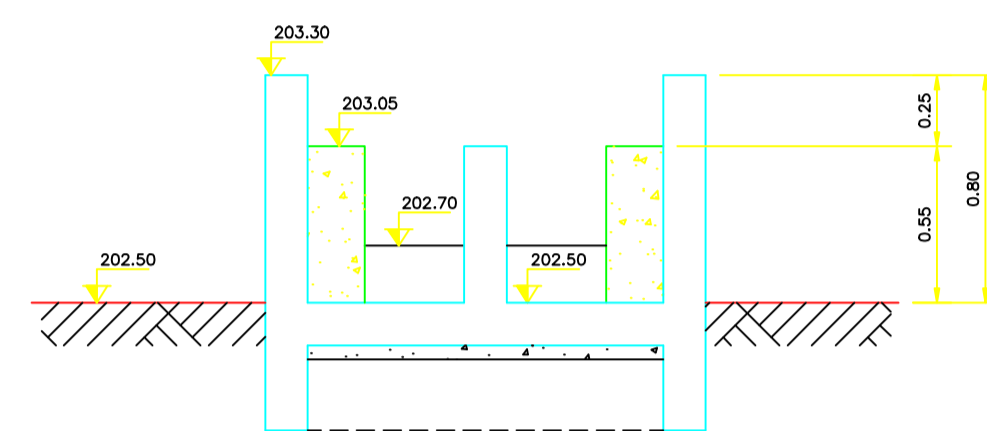
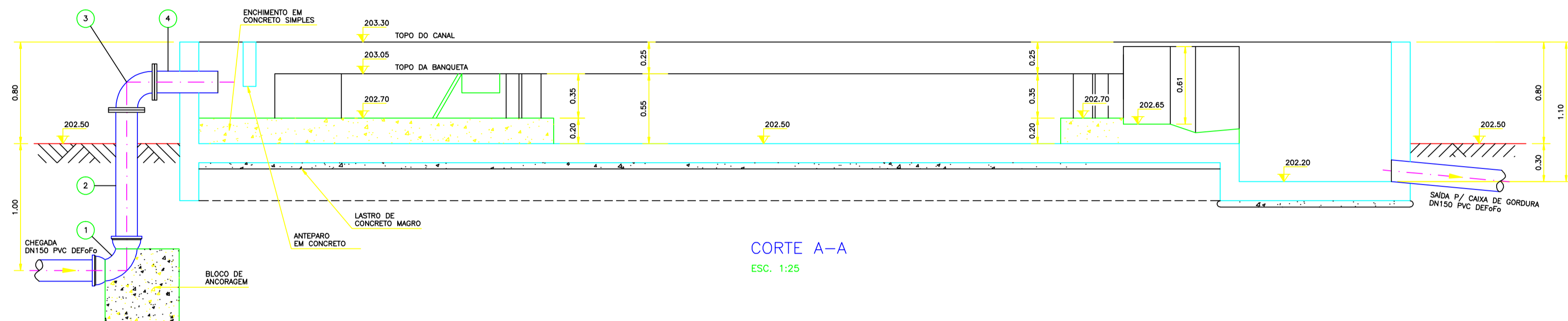
CONFIGURAÇÃO P/ PLOTAGEM		
Nº DA COR	Nº DA PENNA	ESP. DA PENNA
1	7	0.90
2	7	0.10
3	7	0.40
4	7	0.70
5	7	0.50
6	7	0.20
7	7	0.25
20	1	0.20
21	7	0.15
30	7	0.30
100	3	0.30
150	5	0.25
170	5	0.50

ESC. P/ PLOTAR  
 1=0.03

Nº DO ARQUIVO  
 PES01H0ET025\_R0

TATIANA  
 30082006

RELAÇÃO DE MATERIAL							
ITEM	DISCRIMINAÇÃO	ABREV. FABR.	MATERIAL	DIAM. (mm)	UNID.	QUANT.	OBSERVAÇÃO
1	CURVA 90° COM BOLSAS	C90UGS	F.F.	150	UN	01	
2	TUBO FLANGE E PONTA L= 1.10m	TFP10	F.F.	150	UN	01	
3	CURVA 90° COM FLANGES	C90FF10	F.F.	150	UN	01	
4	TUBO FLANGE E PONTA L= 0.50m	TFP10	F.F.	150	UN	01	
5	JUNTA PARA FLANGES	ABF10	BORR.	150	UN	02	
6	PARAFUSOS PARA FLANGES	PPF10	AÇO	20x90	UN	16	

[illegible]